

CUTTING
WELDING

SINCE 1898



CNC 5010

Modern CNC control for guiding machines for oxy-fuel,
plasma and laser cutting

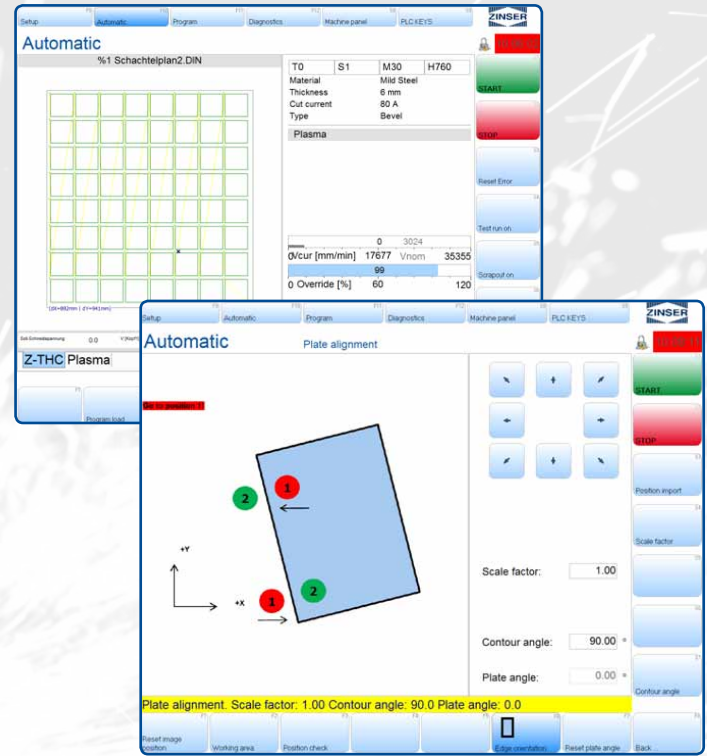


**Made in
Germany**

Since 1898

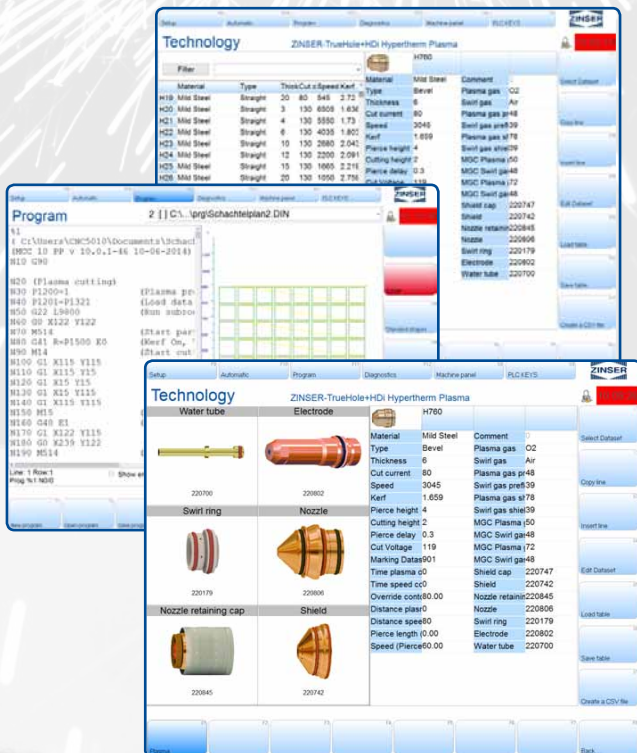
Features:

- Modern PLC-architecture (multitasking) tested according to norm IEC 6-1131-3, depending on task cycle time varies between 2 msec and 10 msec
- Flexible number of CNC-axes (up to 32 axes possible)
- Axis control via digital drive bus (digital position control) enables an extreme accurate and high degree of quality interpolation
- Look-Ahead-Function for accurate observance of pre-determined cutting speed
- Input/output via digital IO-Bus
- Automation of work processes by process parameters from technology databases
- Uncomplicated zoom in function
- Intuitive and fast interface
- ZINSER high control is controlled directly. Manual operation is always possible



Supported technologies:

- ▶ Oxy-acetylene (max. 12 torches) & 3D-oxy-acetylene
- ▶ Plasma & 3D-plasma
- ▶ CNC drilling units
- ▶ Laser
- ▶ Marking system (needle marking, inkjet marker)



- Based on IPC, with Intel i5 CPU
- 8 USB ports
- 17" TFT screen or 22" TFT LED touch screen
- 256 GB NVMe SSD
- 8 GB DDR4 RAM (can be extended to up to 16 GB)
- Installation of an air condition is possible
- Integrated network card for network connection
- Joystick for manual process and performing of split cuts available
- Power supply: 24 VDC
- Microsoft Windows 10 IoT Enterprise
- Combination of sheet metal and pipe processing possible (also 3D)
- Editable and expandable databases of all kind of process parameters available
- Diagnosis and remote maintenance via internet
- Remote maintenance service from ZINSER

CUTTING
WELDING

SINCE 1898



Further information and detailed consultancy on the best cutting system for you can be obtained from your ZINSER team!

ZINSER GmbH
Daimlerstr. 4
73095 Albershausen / Germany
Phone +49 7161 5050-0
Fax +49 7161 5050-100
info@zinsler.de | www.zinsler.de