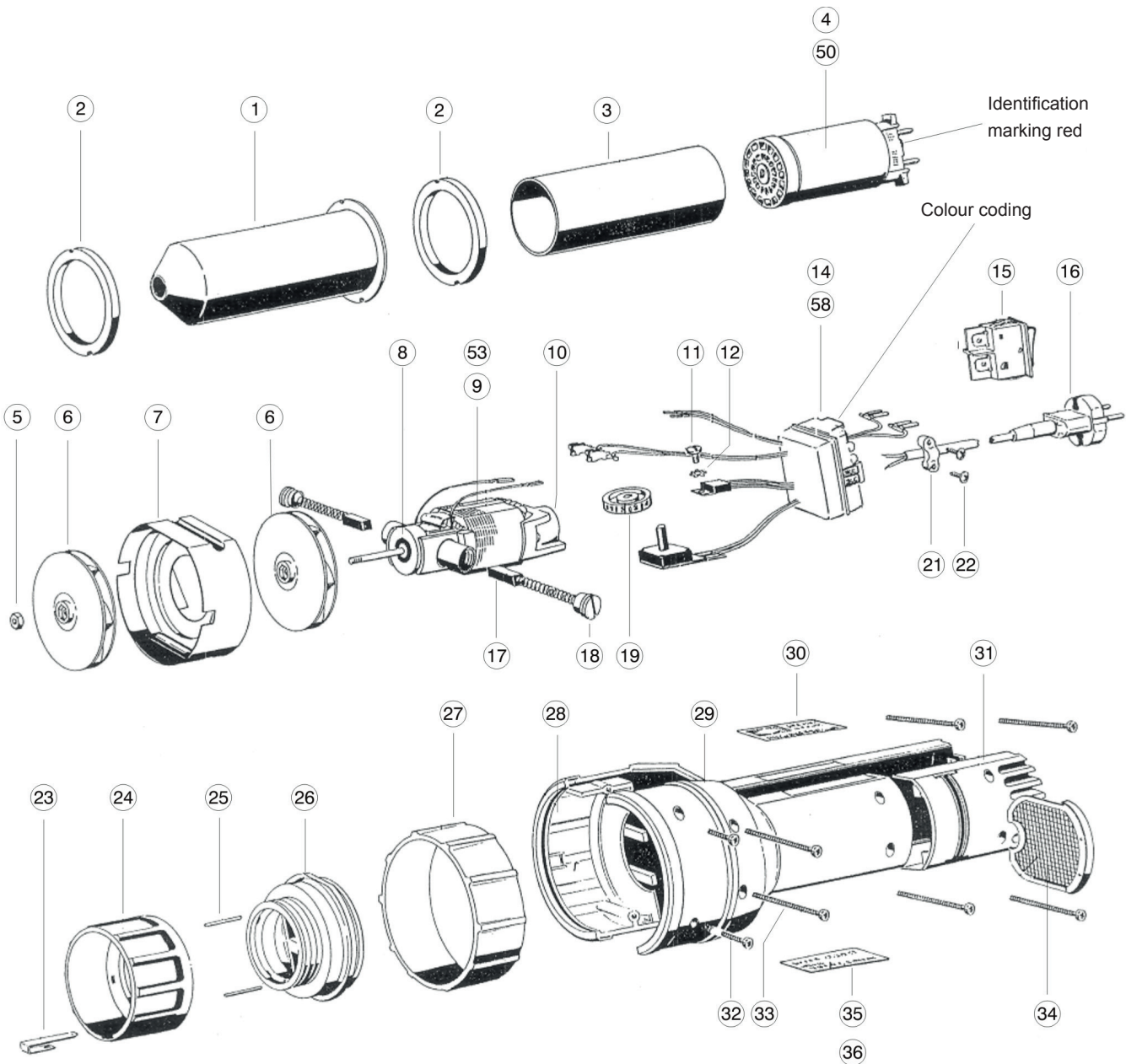


Spare Parts Jumbotherm

K25.30 / K25.16



Number	Order Number	Description	Specification
1	284 0076-120	outer sleeve	
2	285 0014-031	insulating disc	
3	285 0014-032	insulation tube	
4	284 0181-212	heating element K25.30	230 V / 3 000 W (red)
5	050 1901-006	hex-nut	M4
6	285 0042-014	fan wheel ass.	
7	285 0004-136	ventilation for casing	
8	040 0201-060	deep groove ball bearing	
9	285 0043-027	built-in motor EM44-40K	230 V / 40 W / long spindle
10	040 0201-056	deep groove ball bearing	
11	050 1001-005	cylinder head screw	M3x5
12	050 3001-005	toothed locked washer elastic	A3.2
14	284 0054-028	electronic control K25.30	230 V / 3 000 W (green)
15	285 0037-028	switch	
16	285 0065-027	connecting cable 3 m	H05RR-F2x1.5 with plug
17	285 0182-010	small carbon	6x5x21 mm
18	285 0183-005	screw for carbon brush	
19	285 0007-018	rotary switch	
21	285 0068-022	strain relief clamp	
22	050 0801-040	ejot-screw	KB40 WN1442 KB 4x12 steel
23	285 0090-483	catch spring	
24	285 0009-008	cap nut	
25	050 4003-004	close tolerance grooved pin	2x14
26	285 0004-137	casing cap	
27	285 0053-041	supporting collar	
28	284 0004-099	left housing	cpl. with thread inserts
29	285 0004-139	right housing	
30	285 0006-105	company label	
31	285 0004-140	cover	
32	050 0707-010	recessed lens head screw	M3x20
33	050 0707-020	recessed lens head screw	M3x30
34	284 0221-002	filter	
35	285 0006-121	type label K25.30	230 V / 50 Hz / 3 000 W
36	285 0006-133	type label K25.16	120 V / 1 680 W
50	284 0181-213	heating element K25.16	120 V / 1 600 W (red)
53	285 0043-028	built-in motor EM44-40K	120 V / 40 W / long spindle
58	284 0054-027	electronic control K25.16	120 V / 1 600 W (black)