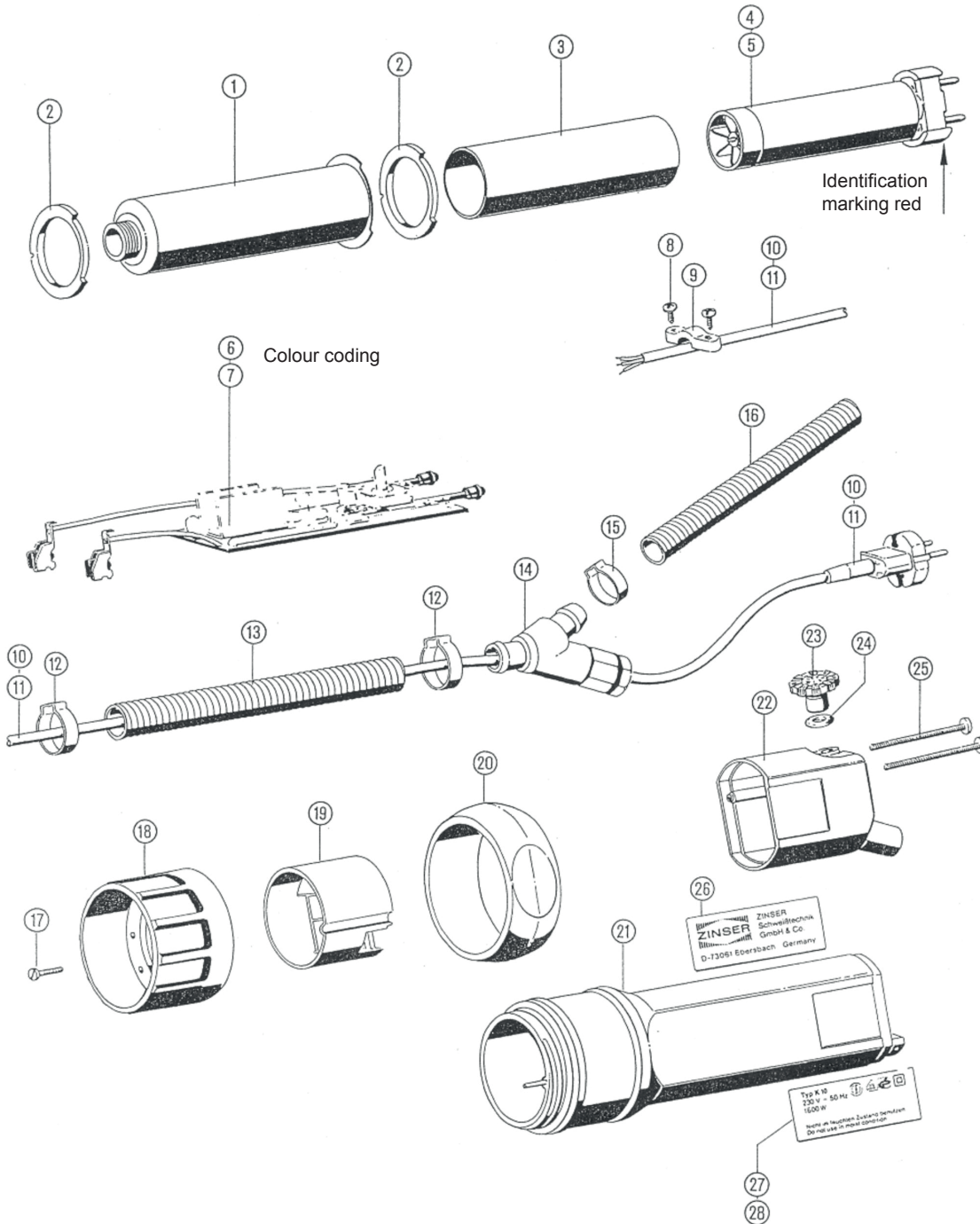


# Spare Parts K10

281 0010-013 / 281 0010-014



Number	Order Number	Description	Specification
1	283 0076-006	outer sleeve	
2	285 0014-018	insulating disc	up to 1997 (year of construction)
	285 0014-035	insulating disc	from 1998 (year of construction)
3	285 0014-022	insulation tube	
4	284 0181-215	heating element K10	230 V / 1 600 W (red)
5	284 0181-211	heating element K10	120 V / 1 600 W (red)
6	284 0054-033	electronic control K10	230 V / 1 600 W
7	284 0054-033	electronic control K10	120 V / 1 600 W
8	050 0801-040	ejot-screw	KB40 WN1442 KB 40x12 steel
9	285 0068-024	strain relief clamp	
10	285 0065-029	lead 5 m	2x1 mm with plug
11	285 0065-030	lead 5 m	USA design
12	285 0068-026	hose clip	21.8 mm
13	285 0082-003	air hose 4 m	LW PG16
14	284 0004-106	Y-branch	with strain relief
15	285 0068-027	hose clip	17.5 mm
16	285 0082-004	air hose 1 m	LW PG11
17	050 1204-002	thread grooving screw	M3x16
18	285 0009-010	cap nut	
19	285 0090-509	clamp for contact spring	
20	285 0053-043	supporting collar	
21	284 0004-104	handle cpl.	
22	284 0004-107	casing cap	
23	285 0007-020	rotary knob	
24	040 0503-071	O-ring seal	
25	050 0708-001	lens head screw	M3x50
26	285 0006-105	company label	
27	285 0006-140	type label K10	230 V / 1 600 W
28	285 0006-141	type label K10	120 V / 1 600 W