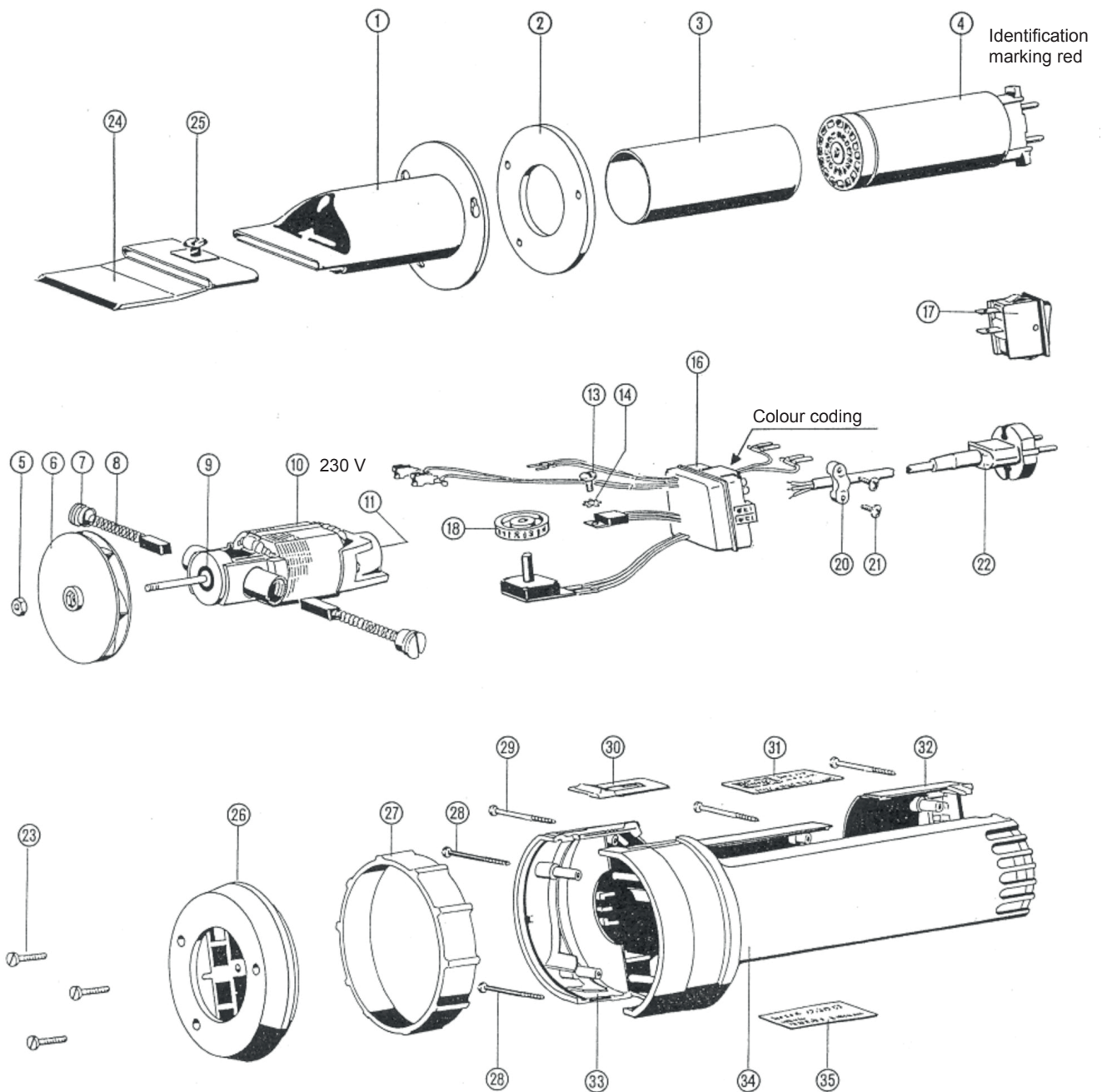


# Spare Parts K5.30FR

281 0005-069



Subject to technical modifications 01/2018

Number	Order Number	Description	Specification
1	284 0199-013	wide-slot nozzle	70x4 mm
2	285 0014-027	insulating disc	
3	285 0014-026	insulation tube	
4	284 0181-212	heating element K5.30FR	230 V / 3 000 W (red)
5	050 1901-006	hex-nut	M4
6	285 0042-011	fan wheel ass.	
7	285 0183-005	screw for carbon brush	
8	285 0182-010	small carbon	6x5x21 mm
9	040 0201-060	deep groove ball bearing	
10	285 0043-022	built-in motor EM44-40K	230 V / 35 W / 17 000 U/min
11	040 0201-056	deep groove ball bearing	
13	050 1001-005	cylinder screw	M3x5
14	050 3001-005	toothed locked washer elastic	A3.2
16	284 0054-029	electronic control K5.30FR	230 V / 6 000 W (green/yellow)
17	285 0037-027	rocker switch	
18	285 0007-018	rotary switch	
20	285 0068-020	strain relief clamp	
21	050 0801-040	ejot-screw	KB40 WN1442 KB 40x12 steel
22	285 0065-027	lead with central shaped plug, 3m	H05RR-F2x1.5 with plug
23	050 0701-074	flat headed screw	M4x12
24	284 0199-009	scraper	70 mm
25	050 0701-077	flat headed screw	M6x10
26	284 0004-096	casing cap	
27	285 0053-038	supporting collar	
28	050 0707-020	recessed lens head screw	M3x30
29	050 0707-010	recessed lens head screw	M3x20
30	285 0070-002	slide	
31	285 0006-105	company label	
32	285 0004-120	cover	
33	285 0004-119	right housing	
34	284 0004-095	left housing	
35	285 0006-134	type label K5.30FR	