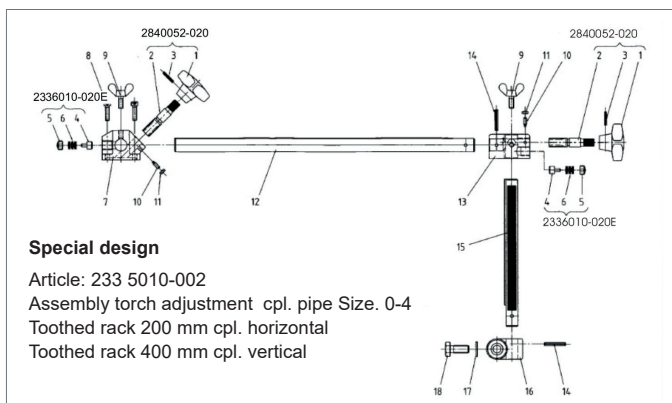
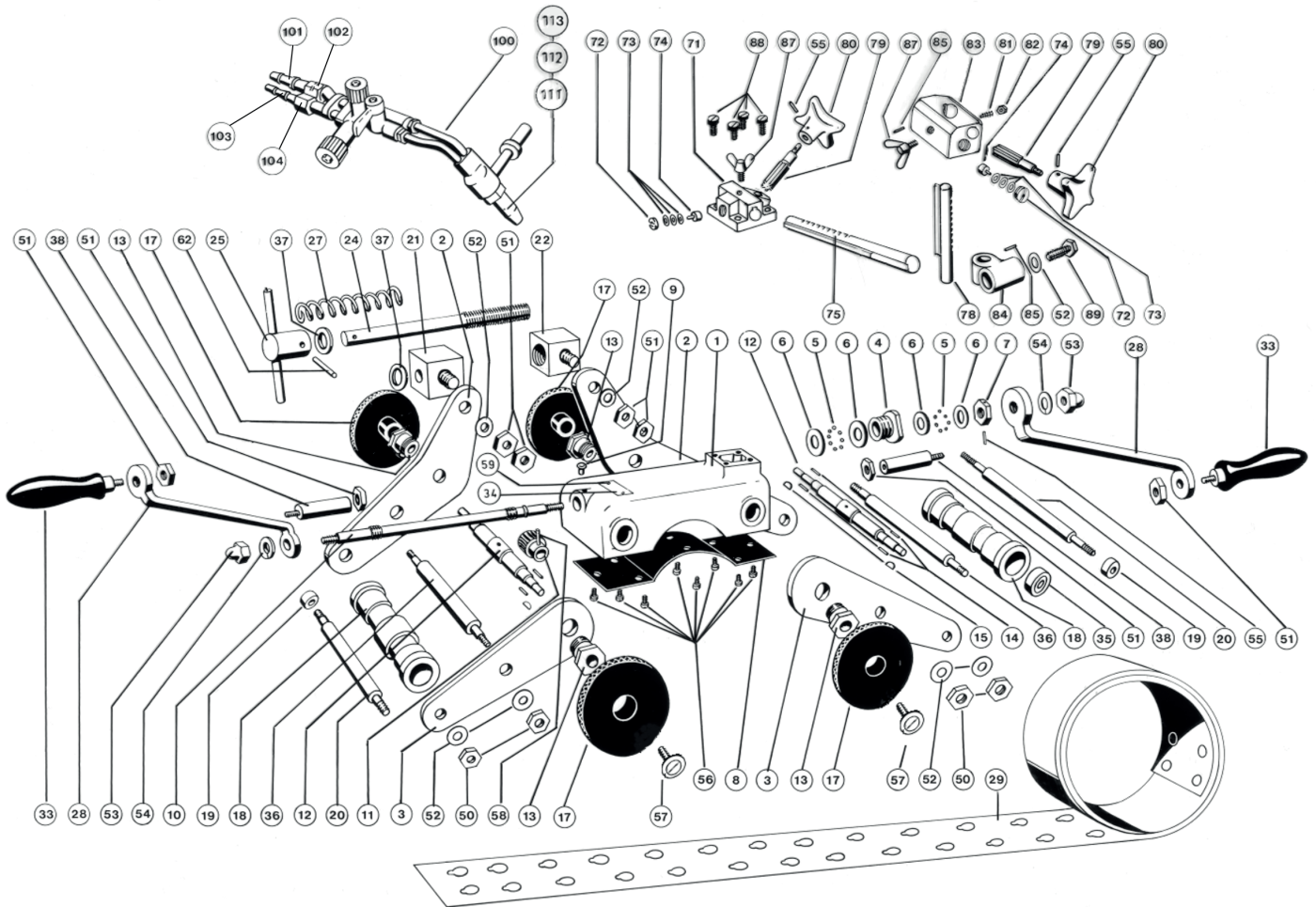


Spare Parts RSV-4 + RSV-4/14

231 5210-001



Single parts

Number	Order Number	Description	Part of assembly group:
1	235 5010-001	Housing	
2	235 5210-005	Lever link RSV-4	
2	235 5210-020	Lever link RSV-4/14	
3	235 5210-006	Lever RSV-4	
3	235 5210-021	Lever RSV-4/14	
4	235 5010-003	Bearing bush	B5
5	040 2200-009	Steel ball Ø3 mm	B5
6	050 3509-002	Shim ring 11x17x1.0 mm	B5
7	235 5010-004	Collar	B5
8	235 5010-005	Cover plate	
9	030 0506-001	Lubricating nipple	
10	235 5010-002	Worm shaft	B5
11	235 5010-006	Worm gear	
12	235 5010-007	Shaft	
13	235 5010-008	Guide bush	
14	040 0207-002	Needle assembly K 12x16x13 TN	
15	050 4503-002	Spring washer 2x2.6 mm	
17	235 5010-009	Drive gear	
18	235 5210-007	Roll	B3
19	050 3509-003	Washer 10x15	B3
20	235 5210-008	Axis	B3
21	235 5210-009	Spindle holder	B4
22	235 5210-010	Spindle nut	B4
24	235 5210-011	Spindle	B4
25.1	234 5210-005	Hub with groove pin; L=30 mm	B4
25.2	235 5290-101	Hub with groove pin; L=120 mm, RSV 4 motorized+ RSV 4/14 + RSV 4/14 motorized	
27	040 0102-043	Pressure spring 4x16.5x60	B4
28	235 5010-010	Crank handle	B2
29	234 5210-001	Steel band 600-1000 mm	
33	040 0802-005	Handle	B2
34	235 5010-011	Shield	
35	040 0201-023	Grooved ball bearing	B3
36	235 5050-004	Distance bolt	
37	235 5210-013	Washer	
38	235 5210-001	Extension for crank shaft (RSV-4/14 4 pieces)	B2
50	050 1901-010	Hexagon nut M10	B3
51	050 1908-010	Hexagon nut M10 flat	B2
52	050 3501-007	Washer 10.5	B3
53	050 2101-003	Cap nut M10	B2
54	050 2901-006	Washer spring A10	B2
55	050 4101-010	Clamping sleeve 3x18	B1, B5
56	050 0701-064	Pan head slotted screw M4x6	
57	050 0702-055	Flat headed screw	

Number	Order Number	Description	Part of assembly group:
58	050 4101-017	Clamping sleeve 4x24	
59	050 4201-002	Round head grooved pin (brass) 1.4x4	
62	050 4101-032	Clamping sleeve 6x24	B4
71	235 6012-002	Horizontal guide	B1
72	235 6010-012	Brake screw	B1
73	050 3203-005	Plate spring 10x4.2x0.4x0.7	B1
74	235 6010-011	Brake plug	B1
75	235 6010-020	Toothed rack - horizontal	B1
75-1	235 6010-019	Tooth rack - horizontal 400 mm Special design	
78	235 6010-021	Toothed rack - vertical	B1
78-1	235 6010-039	Tooth rack - vertical 300 mm Special design	
78-2	235 6010-040	Tooth rack - vertical 200 mm Special design	
78-3	235 6010-043	Tooth rack - vertical 400 mm Special design	
79	235 6010-009	Setting pinion	B1
80	040 1401-003	Handwheel C50	B1
81	050 1401-001	Set screw with half-dog point M4x12	B1
82	050 1901-006	Hexagon nut M4	B1
83	235 6011-003	Vertical guide	B1
84	235 6010-004	Burner holder	B1
85	050 4101-019	Clamping sleeve 4x28	B1
87	050 1501-006	Wing screw M6x16	B1
88	050 1002-008	Socket screw	
89	050 0110-052	Hexagon bolt M10x25	
100 a	231 4200-001	Cutting torch acetylene (without nozzle)	
100 p	231 4220-001	Cutting torch propane (without nozzle)	
101	0600 400-002	Hose socket 9 mm G3/8 heating gas	
102	0600 401-020	Connecting nut G3/8LH heating gas	
103	0600 400-003	Hose socket 6 mm G1/4 oxygen	
104	0600 401-003	Connecting nut G1/4RH oxygen	
111 a	235 3050-001	Block nozzle acetylene 3-10 mm	
111 p	235 3060-001	Block cutting nozzle propane 3-10 mm	
112 a	235 3050-002	Block nozzle acetylene 10-30 mm	
112 p	235 3060-002	Block cutting nozzle propane 10-30 mm	
113	235 3090-012	Heating nozzle propane und acetylene 3-100 mm	

Assembly groups

Number	Order Number	Description	Includes the following parts:
B1	2335010-001	Torch adjustment complete	No. 55, 71-75, 78, 79-85, 87
B2	2345210-004	Crank complete	No. 28, 33, 38, 51, 53, 54
B3	2345210-002	Roll complete	No. 18-20, 35, 50, 52
B4	2345210-003	Spindle complete	No. 21, 22, 24, 25, 27, 62
B5	2345230-010	Worm shaft complete	No. 4-7, 10, 55

Special design: Article 233 5010-002
Assembly torch adjustment cpl. pipe Size. 0-4
Tooth rack 200 mm cpl. horizontal
Tooth rack 400 mm cpl. vertical

Number	Order Number	Description
1	040 1401-003	Handwheel C50
2	235 6010-009	Bevel 60 mm long
3	050 4101-010	Clamping sleeve 3x18
4	235 6010-011	Brake plug
5	235 6010-012	Brake screw
6	050 3202-005	Plate spring
7	235 6012-002	Horizontal guide
8	050 1002-009	Cylinder head screw M5x20
9	050 1501-006	Wing screw M6x16
10	050 1401-001	Set screw
11	050 1901-006	Hexagon nut M4 flat
12	235 6010-019	Tooth rack - horizontal 400 mm
13	235 6011-003	Vertical guide
14	050 4101-019	Clamping sleeve 4x28
15	235 6010-040	Tooth rack - vertical 200 mm
16	235 6010-004	Burner holder
17	050 3501-007	Disc
18	050 0110-052	Countersink M10x25