

CUTTING
WELDING

SINCE 1898



ZINSER Analyst

User-oriented and practical solution for production data analysis

The screenshot displays the ZINSER Analyst software interface, which is divided into several functional areas:

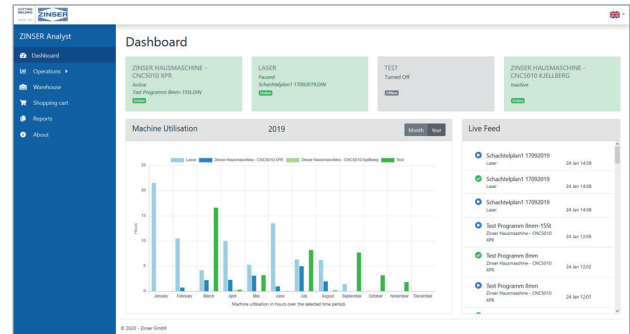
- Dashboard:** Provides an overview of machine status. It includes cards for 'ZINSER HAUSMASCHINE - CNC5010 XPR' (Active), 'LASER' (powered), 'TEST Turned Off', and 'ZINSER HAUSMASCHINE - CNC5010 KJELLBERG' (Inactive).
- Machine Utilisation:** A bar chart showing machine usage in hours for 2019, broken down by month and machine type (Laser, Zinser Hausmaschine - CNC5010 XPR, Zinser Hausmaschine - CNC5010 Kjellberg, Test).
- Live Feed:** A real-time log of machine activities, such as 'Schachteplan1 17092019' and 'Test Programm 8mm-155t'.
- Machine Details (ZINSER 1825-S):** Shows specific machine information including Machine Number (00000010), Machine Type (1825-S), and Controller (CNC5010). It also features a 'Programs' table with columns for Program Name, Start, End, Status, Error Level, Total Time, Pause Time, Active Time, and Efficiency.
- Machine Details (ZINSER 4025):** Shows information for another machine, including Machine Number (00001002), Machine Type (4025), and Controller (CNC5010). It features a 'Consumables' table with columns for Head, Consumable Type, Part Number, Material, Current, Fitted, Removed, Arc Time, and Ignitions.



ZINSER Analyst

ZINSER Analyst is a user-oriented and practical production data analysis software equally suitable for globally active companies as well as small businesses. With ZINSER Analyst any ZINSER user can increase the efficiency of its production in order to achieve sustainable growth and stay competitive.

ZINSER Analyst records the production data of all your CNC5010 machines and consolidates them into a modern web-based application. This application shows the current status and activities of all connected machines in a clearly arranged manner.



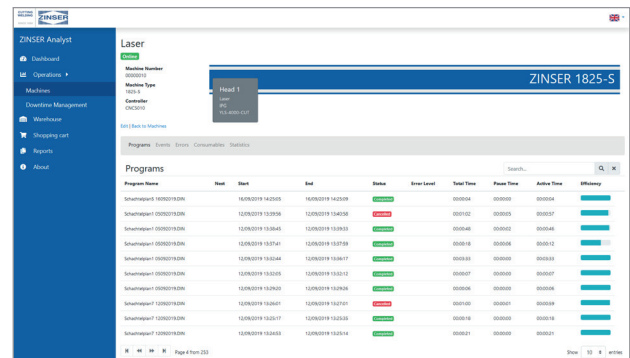
The dashboard: overview of all machine activities / utilized machine capacities of the current month and year

ZINSER Analyst offers you:

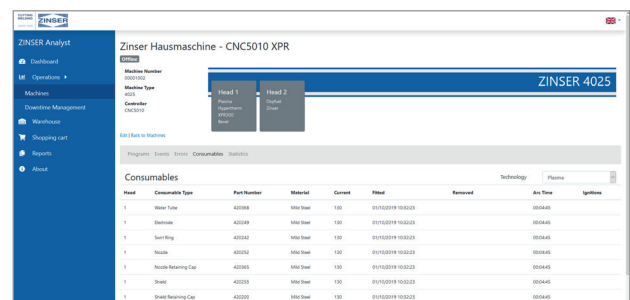
- A solid base for the efficient organization of your work and production processes thanks to a reliable data collection and analysis
- Reaction in real time as all necessary data are recorded automatically and digitally, directly at their point and time of origin
- Less machine downtime due to centralized monitoring of all spare parts
- Possibility for a well-founded order controlling and production planning based on actual production data

ZINSER Analyst features

- The dashboard shows the current operational status of all of your machines as well as the utilized capacities of the current month and year
- Graphical display of the capacities and usage during the previous months / years
- Analysis of all cut programs per machine
- Analysis of all error messages
- Spare parts overview with current status information
- Various diagrams:
 - Technology: number of hours per technology
 - Material: percentages
 - Machine utilization: running time vs. down time
 - Machine: daily activities
- Definition of downtime reasons
- Multi-lingual: German, English and French. Additional languages upon request



All cut programs per machine



Spare parts overview

Please contact us for further information, like an online presentation: