



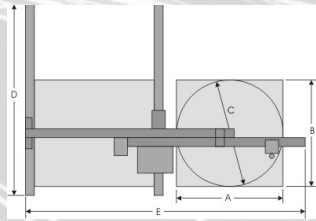
CUTTING  
WELDING  
  
SINCE 1898



# ZINSEK 1101

Flame cutting machine for oxygen cutting with optical follower control

Technical data		
Width of machine mm approx.	E	2850
Length of machine mm approx.	D	2000
Cutting width mm	A	1000
Weight kg approx.		190
Supply voltage volt		230
Input power watt approx.		250



CUTTING  
WELDING  
  
SINCE 1898



Subject to changes and possible errors 05.15 01 803-001 ZINSEK 1101

Further information and detailed consultancy on the best cutting system for you can be obtained from your ZINSEK team.

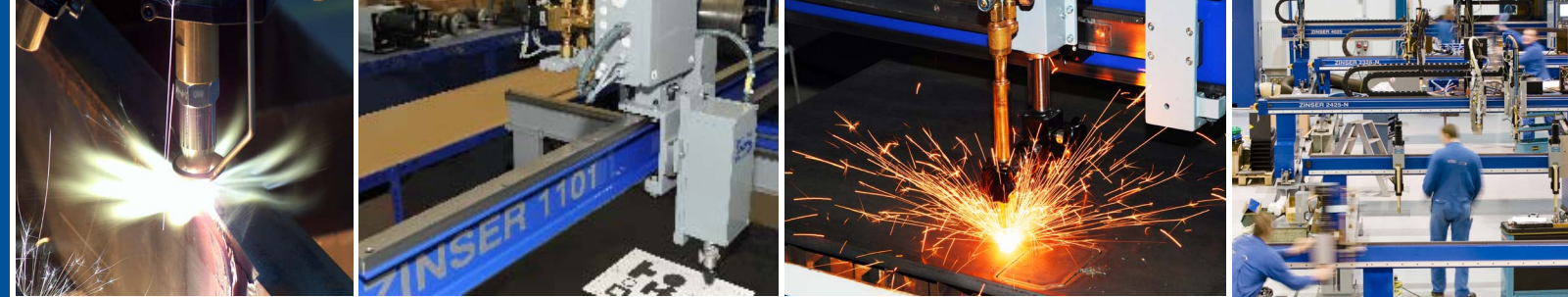
ZINSEK GmbH  
Daimlerstr. 4  
73095 Albershausen/Germany  
Phone +49 7161 5050-0  
Fax +49 7161 5050-100  
info@zinsek.de | www.zinsek.de





# ZINSER 1101

Flame cutting machine for oxygen cutting with optical follower control



## Functions:

- Manual control, coordinate switch for all 4 directions
- Line and edge tracing
- Tracing speed progressively adjustable 50 - 1000 mm/min, changing-over 200 - 4000 mm/min
- Automatic start of cut (slow start of cut, connection of feed and cutting oxygen at start of cut)
- Automatic switch-off of feed and cutting oxygen
- If losing the line, kerf compensation  $\pm 3$  mm

## Basic equipment of the fully equipped machine:

- Opto electronic follower control
- Three-hose machine torch for 3 - 100 mm
- Connection for max. 2 torches is available

## Supplementary accessories:

- Motorized and capacitive torch height adjustment
- Central gas supply
- Electric torch ignition device
- Piercing device

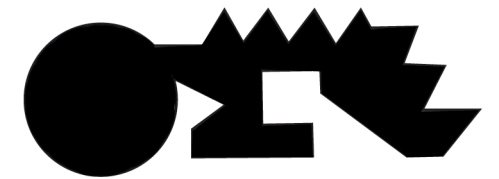
## Flame cutting machine for oxygen cutting with optical follower control

The rack and pinion drive of the flame cutting machine **ZINSER 1101** guarantee a reliable tracing if working with high speed. The approved optical follower control LK 110 is equipped with electronics which is easy to service.

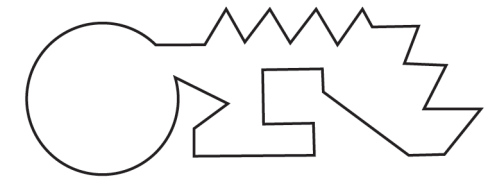
By means of an externally mounted potentiometer, amplification and zero-compensation can be adjusted, that means that photostats, photoprints can be traced, too. The copies to be traced can be fixed very easily on the sheet steel tracing table by means of magnets. Tracing size 1000 x 1000 mm.



Edge tracing



Line tracing



## Copies:

Line drawings, photoprints, photo-stats etc.

CUTTING  
WELDING

SINCE 1898

